

SHOWER AND HYGIENE CHAIR

Carino®



Featuring
patented curved
frame and
swing-away
leg rests

Designed to reduce the number of transfers required for assisted showering and hygiene, Carino® enables a single caregiver to perform everyday hygiene tasks such as washing, toileting and foot care.

Designed with Barbara and Carl in mind



Height-adjustable

Height-adjustability combined with a patented curved frame provide comfortable positioning and support for the patient or resident, while allowing the carer to reach their preferred working height at all times.

Facilitates efficient showering routines

The patient or resident may remain seated in the Carino as they are transferred to and from the bedroom as well as for showering, toileting and other hygiene tasks, thus reducing the number of transfers required for daily hygiene routines.

One-to-one care

With Carino, showering and other hygiene routines can be carried out by one caregiver, thus facilitating personal one-to-one interactions.

Key features

CURVED FRAME

Patented curved frame provides support and a comfortable seated position at any height.

FOLDABLE ARM RESTS

SWING-AWAY LEG RESTS

Patented leg supports swing open to provide access for performing discreet hygiene tasks.

ROTATING FOOTPLATES

Tuck under the hygiene chair when not needed.

HEAD CUSHION

FULL-LENGTH BACKREST

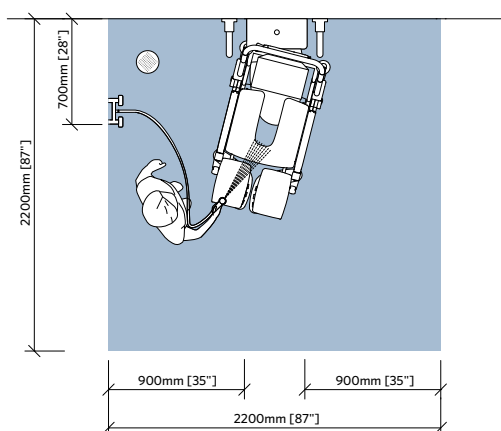
EMERGENCY STOP



ACCESSORIES

- Back pillow
- Neck pillow
- Seat cushion
- Bed pan with lid
- Toilet adapter
- Safety belt
- Battery charger and battery
- Surface disinfectant

SPACE REQUIREMENT



Required working area to facilitate hygiene and transfer activities while providing adequate access for the resident, equipment and assisting carer.

PRODUCT INFORMATION

Safe working load (SWL)	140 kg (309 lb)
Weight	42 kg (93 lb)
Min length, lowest position	881 mm (34 ½ in)
Max length, highest position	1310 mm (51 ½ in)
Total width	630 mm (24 ¾ in)
Chassis, width	624 mm (24 ¼ in)
Chassis, width between legs	424 mm (16 ⅝ in)
Chassis, length	857 mm (33 ¾ in)
Min height backrest, lowest position	1240 mm (48 ⅝ in)
Max height backrest, top position	1555 mm (61 ¼ in)
Seat height, lowest/highest position	450 mm (17 ¾ in)/ 1050 mm (41 ⅜ in)
Lifting stroke (seat)	600 mm (23 ⅝ in)

For more detailed information visit www.arjo.com